

Four[®] Mat

Design: Strand & Hvass | Concept: Four Design

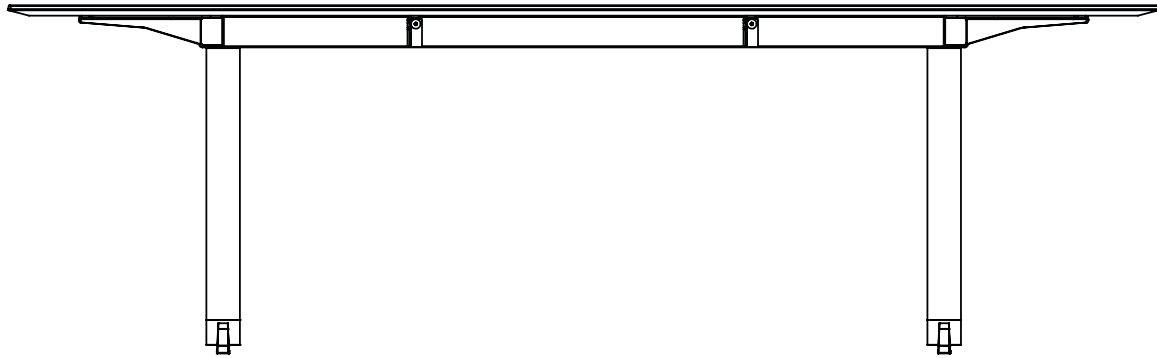


Four[®] Mat is your evident choice for a conference table in a unique and aesthetic design and it's delivered with lightweight polished aluminium frame.

The table is available in 5 different standard sizes. It is possible to upgrade Four[®] Mat with cabling duct and motorized adjustable height.

Four[®] Mat

Design: Strand & Hvass | Concept: Four Design



Materials:

Table tops:

Chip board with high pressure laminate or Fenix-Nano laminate and ABS edges. Thickness: 24 mm.

Chip board with wood veneer on table top and edges.

Thickness: 24 mm. See price list for description of veneer direction at different sizes.

Compact laminate, white with black core. Thickness: 12 mm.

MDF board with linoleum and black painted edges. Thickness: 24 mm.

Colors and surfaces: See overview. Other options on request.

Frame:

Steel, Ø 56 x 3 mm. / Aluminum: Ø 70 x 1,5 mm.

Dimensions:

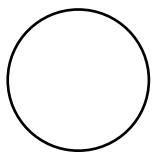
Table height: 72,5 cm. (Optional motorised height adjustment from 67,5 to 109,5 cm)
Special sizes and heights can be delivered on request.

180 x 90 cm
200 x 100 cm
240 x 110 cm
300 x 125 cm
ø120 cm

*We kindly refer to our price list for dimensions on other models.

Four[®] Mat

Design: Strand & Hvass / Concept: Four Design



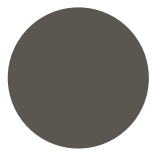
LAMINATE



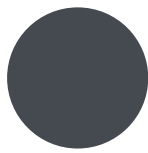
LAMINATE



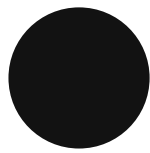
LAMINATE



FENIX
NANO-LAMINATE



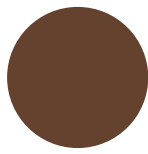
FENIX
NANO-LAMINATE



FENIX
NANO-LAMINATE



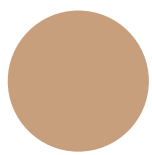
VEENER



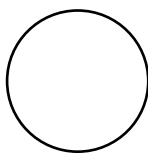
VEENER



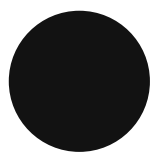
VEENER



VEENER



COMPACT
LAMINATE



LINOLEUM

Models:

Table tops: High pressure laminate / Fenix-Nano laminate / Wood veneer / Compact laminate / Linoleum

Frame: T-frame / round tables with pedestal base and star base

Frame surface: Polished aluminium

Accessories:

- Motorised height adjustment from 67,5 to 109,5 cm.
- Cabel duct, single or double with lid
- Power sockets, 4 or 8 x 240V, with 5 m cord.
- Additional tables and tops (See price list for details)

Four[®] Mat

Design: Strand & Hvass | Concept: Four Design

ISO14001:

We are aware of our environmental responsibilities. We strive towards a minimal burden in the internal and external environment. The internal environment is evaluated through a careful examination of components and materials used in the production manufacturing processes. The external environment is monitored through laws and regulations.

It is important to Four Design that our suppliers abide to the environmental laws regarding production and handling of waste materials. It is our goal to always use environmentally friendly raw materials. Four Design A/S can document our commitment to the environment.

We have been awarded the Miljøforum Fyn's Environment Diploma and obtained the ISO14001 certificate in 2011.

Recycling:

General: Tables must be separated into parts (table tops and metal parts).

Metal parts: All metal parts on Four Design tables can be disposed of and recycled by an approved environment and raw materials organization. Lacquered frames are treated with a paint classified as not dangerous according to directive 1999/45/EF.

Table tops on Four Design tables cannot be reused, and must be disposed of in the incinerator.

Maintenance:

We kindly refer to our Maintenance Guide:
http://www.fourdesign.dk/pdf/FourDesign_Cleaning.pdf

Warranty:

Four Design provides an extended warranty of 5 years on all products in our official price list.

The warranty covers breakage of frames and damage occurred because of deficient craftsmanship performance under normal use.

The warranty shall lapse if the product shows signs of mishandling abuse or other physical damage. The warranty does not cover those parts of the product which are exposed to abrasion during use.

Tests:

Polyshells: ZEK / 01.2-08, Testing and Validation of Polycyclic Aromatic Hydro-carbons (PAH). All products from Four Design are PVC-free.

Surfaces, table tops (Laminate, painted):

- DS/INF. 132, 2002
- DS/EN 12720, 2009
- DS/EN 12722, 2009
- SIS 839117
- SS 83 91 22, 1981

High pressure laminate:

- DIN EN 120 (1992), E1-quality (Formaldehyde emission).